

www.Fiddleheads.ca • Violin Key Signatures: Sharps “#”

Instructions: Play notes marked with a circle (hollow circles = open strings). Some keys don't use open strings; such notes are blacked-out.

●● Green highlighted circles indicate tonic/root notes of the key. These are the first and last notes of a major scale.

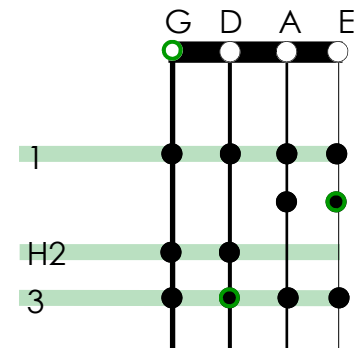
∨ Symbol indicates a half-step: fingers close together or touching



G Major / E Minor

All Notes natural, except F#

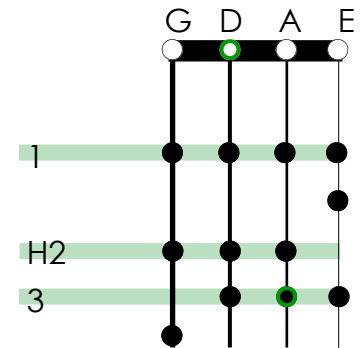
G A B C D E F# G



D Major / B Minor

All Notes natural, except F# & C#

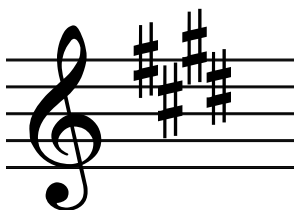
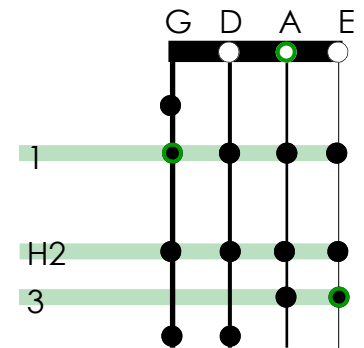
D E F# G A B C# D



A Major / F# Minor

All Notes natural, except F#, C#, & G#

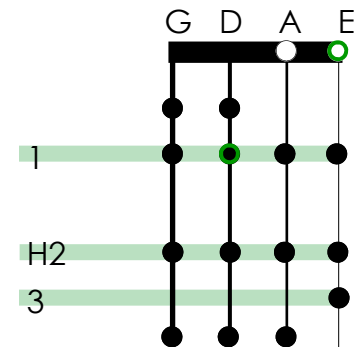
A B C# D E F# G# A



E Major / C# Minor

All Notes natural, except F#, C#, G#, & D#

E F# G# A B C# D# E



www.Fiddleheads.ca • Violin Key Signatures: Flats “b”

Instructions: Play notes marked with a circle (hollow circles = open strings). Some keys don't use open strings; such notes are blacked-out.

● Green highlighted circles indicate tonic/root notes of the key. These are the first and last notes of a major scale.

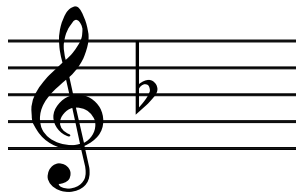
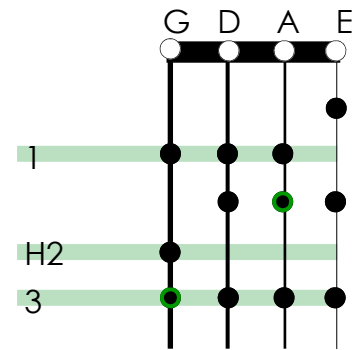
∨ Symbol indicates a half-step: fingers close together or touching



C Major/ A Minor

All Notes natural (no sharps, no flats — like the white keys on a piano)

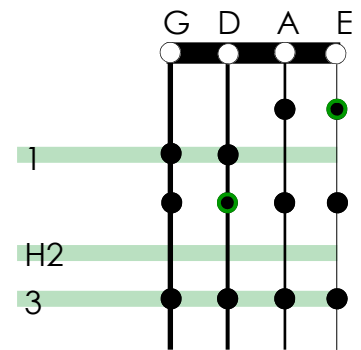
C D E F G A B C



F Major/ D Minor

All Notes natural, except Bb

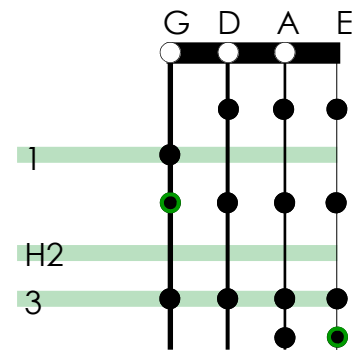
F G A Bb C D E F



Bb Major/ G Minor

All Notes natural, except Bb & Eb

Bb C D Eb F G A Bb



Eb Major/ C Minor

All Notes natural, except Bb, Eb, & Ab

Eb F G Ab Bb C D Eb

